



**nexmosphere**  
elements for experience

**Nexmosphere**

Le Havre 136  
5627 SW Eindhoven • The Netherlands

**T** +31 40 240 7070  
**E** [info@nexmosphere.com](mailto:info@nexmosphere.com)

**PRODUCT CATALOG**  
2022 Q2

## XPERIENCE

The definition of an experience is something that **happens to you** that **affects how you feel**. A true experience is an event that addresses the senses, creates emotion and in doing so, is **memorized**.

Nexmosphere's products are used to create beautiful **interactive experiences** using exciting technology. We develop and manufacture **sensors** and **controls**, offering a robust **platform solution** for interactive components in Digital Signage installations. Utilizing our API, Nexmosphere's sensor platform is easy to use with almost any digital hardware platform such as BrightSign, Intel or Android and runs with many CMS systems.

Watch our online videos for in-depth product explanation and project inspiration by capturing the QR code below (YouTube):



## ELEMENTS

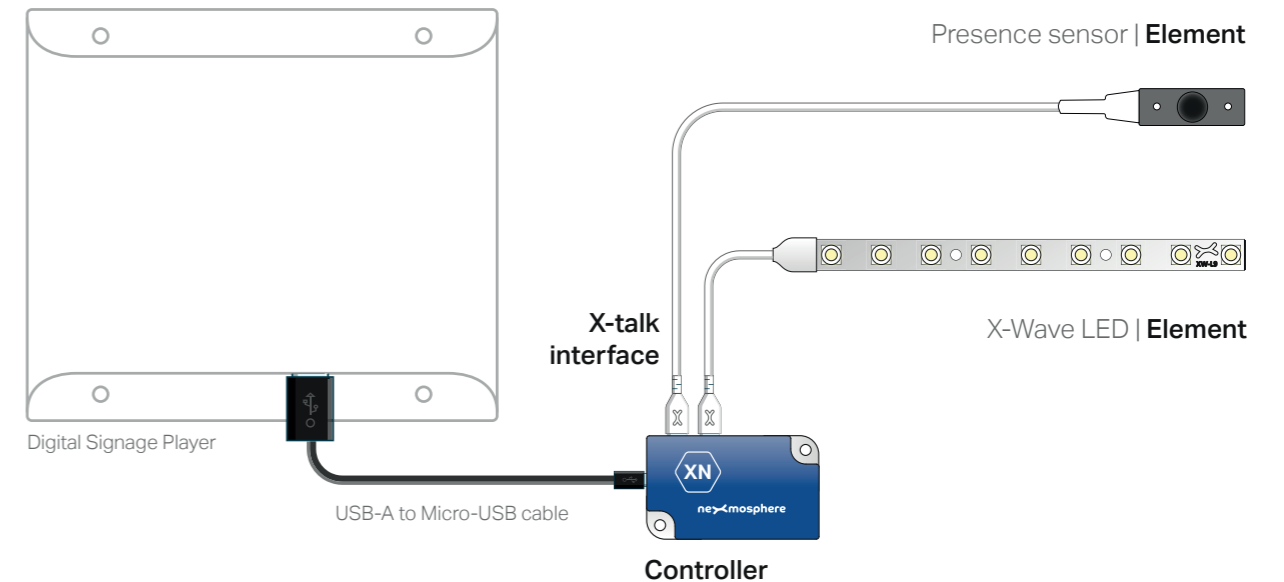
Nexmosphere Elements are our collection of sensors and interfaces, such as pick-up sensors, presence sensors or LED. By combining different Elements on our Xperience controllers, interactive experiences can be created.

## CONTROLLERS

Xperience controllers are used to combine Elements and connect them to any Digital Signage player or PC. The controller is the part of the system that translates the communication coming from the Elements to the connected device and vice versa. Some of the Controllers have additional functionalities embedded into them such as LED control or audio switching.

## X-TALK

The connection method between Nexmosphere's Elements and Controllers is called X-talk. Calculate the number of X-talk channels needed by adding up the number of Elements used and pick the right Controller model for the job.



## ELEMENTS | sensors and actuators

<b>XY Range</b>	people tracking	5
<b>XR Range</b>	RFID pick-up sensors	6
<b>XF Range</b>	wireless pick-up sensor	7
<b>XW Range</b>	animated LED lighting	8
<b>XZ Range</b>	object detection	9
<b>XE Range</b>	environmental sensing	10
<b>XS Range</b>	wired pick-up sensor	11
<b>XD Range</b>	easy interfacing	13
	wired pick-up sensors	14
<b>XT Range</b>	airbuttons, capacitive touch, mechanical buttons	15



## CONTROLLERS | connecting Elements

<b>XN Range</b>	nano Xperience controllers	18
<b>XC Range</b>	compact Xperience controllers	19
<b>XM Range</b>	modular Xperience controllers	21



# ELEMENTS

sensors and interfaces

## XY RANGE | people tracking

The Nexmosphere XY range offers a variety of sensors that detect and analyze presence, distance and demographics of the people in front of your digital signage or POS installation. Whether you want to increase the impact by triggering the right content at the right time, want to program attractive lighting changes and increase engagement, or want to collect valuable data, the XY range has a sensor which provides the input to do so.

### X-EYE PRESENCE & PROXIMITY



The X-Eye Presence sensors are narrow-beam IR proximity sensors that detect if an object or person is present and indicate the distance to the person from the sensor.

#### IR proximity technology

XY-11x	05cm - 80cm
XY-14x	15cm - 150cm
XY-17x	50cm - 500cm 5.5° beam

### X-EYE PRESENCE & AIRBUTTON

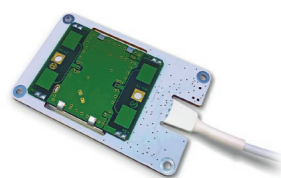


The X-Eye Presence & AirButton sensor is an IR Time-of-Flight sensor that detects if an object or person is present and accurately indicates the distance to the person from the sensor.

#### IR Time-of-Flight

XY-240	0-250cm
XY-241	0-170cm 15 - 27° FoV

### X-EYE MOTION



The X-Eye Motion sensor detects the amount of motion in its detection field. It can be installed behind any non-metal surface, resulting in an invisible embedded sensor solution.

#### Doppler radar

XY-320	1.2m - 10m 10.525 Ghz
--------	--------------------------

### X-EYE GENDER



The X-Eye Gender sensor detects the gender and age range of a person, enabling content triggering and data collection. It does not require network connectivity and doesn't store video data, making it 100% GDPR-compliant.

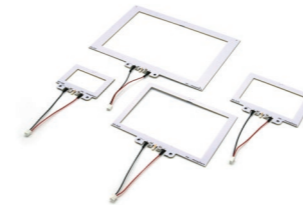
#### Gender recognition Age estimation

XY-510	15cm - 120cm
XY-520	35cm - 250cm

## XR RANGE | RFID pick-up sensors

The Nexmosphere XR range offers the products needed to build wireless pick-up sensors and NFC applications using RFID technology. The antenna driver detects a tag when it gets close to the antenna and sends trigger messages and tag information to the Xperience controller. Adhere the tags under the merchandise and trigger the video content on screen when products get picked-up, or -placed down. The drivers are compatible with any Nexmosphere antenna, and -controller model.

### XR ANTENNAS



The XR antenna is a slim, easy to built-in RFID antenna. It can be hidden behind a variety of non-metallic design materials such as acrylics, wood, glass and stone. Define your detection surface area and match it with the right shape and size antenna for your product and application.

#### RFID technology

XR-C05	circular, 50mm
XR-C10	circular, 100mm
XR-A45	rect., 297x148mm
XR-A50	rect., 210x148mm
XR-A55	rect., 210x74mm
XR-A60	rect., 148x106mm
XR-A65	rect., 148x52mm
XR-A70	rect., 105x74mm
XR-A80	rect., 74x52mm 100mm cable

### XR-DR1 ANTENNA DRIVER



The XR-DR1 antenna driver detects and processes "tag pick-ups" and "tag placement" coming from the connected antenna and tag. It is the ideal solution for easy-to-implement Lift & Learn or Place & Learn applications, containing up to 250 products. It can be used in combination with any of the XR antennas.

#### RFID technology

XR-DR1	13.56 Mhz RFID Multi-Tag detect
--------	------------------------------------

### XR-2 ANTENNA DRIVERS



The XR-2 driver detects "tag placement" and "tag removals" and processes additional tag information from NTAG213 tags such as the UID or text fields. It can also write a Tag number and Custom text labels on the NFC tag. Providing the ideal solution for complex or large-scale NFC applications in which tags need to be dynamically (over)written.

#### NFC technology

XR-DR2	Read-only NFC NTAG213
XR-DW2	Read and Write NFC NTAG213

### RFID TAGS



The standard tags for use with this product range, are industry standard tags that can be ordered already programmed with their respective numbers, or as empty tags that still require programming and labelling.

<b>MiFare tags</b>	<i>use with XR-DR1</i>
XNR tag	26mm, programmed
XNB tag	26mm, unprogrammed
<b>NTAG213 tags</b>	<i>use with XR-2</i>
XNN tag	26mm, unprogrammed

## XF RANGE | wireless pick-up sensors

The Nexmosphere XF range offers an innovative way to use wireless pick-up sensors without the need for installing any hardware within your store furniture or shelving. The battery-powered sensors can be placed in or on your merchandize and facilitate triggering the programmed content on the Xperience controller when the merchandize is interacted with by the shopper. Use this technology to easily transform existing store installations into interactive experiences with minimal effort.

### P3 WIRELESS PICK-UP SENSOR



The P3 sensor is a battery-powered pick-up sensor that can be placed in, or -under merchandize. The sensor detects any change of positioning when the shopper interacts with the merchandize on display and translates this into triggers that are sent towards the controller unit that can be invisibly installed at distance from the actual sensor.

**Pick-up detection (accelerom.)**  
**Wireless comm. 2.4Ghz ANT+**

**XF-P3W** | white housing  
**XF-P3B** | black housing  
**XF-P3N** | no housing

**all** | 2 years avg. battery life  
8-10m range  
32mm diameter

### EM-F WIRELESS X-TALK INTERFACE



The EM-F Extension Modules receive the signals coming from the P3 sensors after these have been paired with a wireless X-talk interface. Each P3 sensor connects to its own wireless X-talk interface on the EM unit. Combine a maximum of 5 EM units onto the controller unit, allowing up to 40 sensor connections on one single controller. All EM modules only work in combination with an XM Xperience controller.

**Wireless X-talk receiver**

**EM-F1** | 1 channel  
**EM-F4** | 4 channel  
**EM-F8** | 8 channel

## XW RANGE | animated LED Lighting

The Nexmosphere X-Wave range consists of a variety of animated LED lighting products. They allow incorporating creative lighting effects in your installations that enhance interactivity. Use animated lighting to attract, highlight, contrast, indicate and guide.

### X-WAVE



The X-Wave is a rigid linear LED board fitted with RGB LEDs. Set any RGB color to match or contrast merchandize or brand style. Settings as dimming speed, light output and sinus repetition can be adjusted to match the required lighting behavior and effect.

**Linear wave lighting**

**XW-L56** | 5 LEDs  
**XW-L96** | 9 LEDs

### X-WAVE LINEAR INTERFACE



The X-Wave Linear interface enables Wave LED control over flexible pixel LED strips. Each interface allows connection to one LED strip. Strips can be divided into segments over which the X-Wave animations can be executed.

**Pixel LED strip interface**  
**Wave animation control**

**XW-DL6** | max. control 120 LEDs  
max. 12 LEDs / segment

*also available as MicroModule, assembled on XN-135 (XN-138MBL)*

### X-WAVE SELECTION INTERFACE



The X-Wave Selection interface enables Selection LED control over flexible pixel LED strips. Each interface allows connection to one LED strip. It allows splitting up LED strips into segments that can be illuminated to indicate products that correspond to selection inputs given by the shopper.

**Pixel LED strip interface**  
**Selection animation control**

**XW-DS6** | max. control 120 LEDs  
max. 26 segments  
max 15 LEDs /segment

*also available as MicroModule, assembled on XN-135 (XN-138MBS)*

### X-WAVE COLOR



The X-Wave Color LED is an X-Dot housed product fitted with one RGB pixel LED. It can be programmed in any color and fade from one color to another. Use it as a visual indicator to mark a certain spot or product of interest.

**RGB indication LED**

**XW-C56** | RGB LED  
Glow animations

## XZ RANGE | object detection

The Nexmosphere XZ range offers a variety of sensors that detect the status of the objects on which they are applied. By detecting the object status, we enable the possibility to log and communicate these values, as well as actively respond to critical threshold values.

### COLOR SENSOR



The XZ-Color sensor can detect the color of objects that are held against or placed upon the sensor. Any color can be detected and communicated back to any Xperience controller.

#### Color sensing

**XZ-H60** | Hue  
Saturation  
Brightness

### LIGHT SENSOR



The XZ-Light sensor can detect the amount of light that falls in the sensor. This information can be used to determine whether merchandize is placed on top of the sensor or not, to create Lift & Learn or Place & Learn applications whenever RFID or battery-powered sensors can't be applied.

#### Object Pick-up detection Light sensor

**XZ-L20** | adj. trigger values  
X-Dot form factor

### ANGLE SENSOR



The XZ-Angle sensor can detect the orientation of the sensor at any given moment, by calculating its angle as opposed to its default relative position that was previously set.

#### Angle orientation detection

**XZ-A40** | 3-axis orientation  
adj. trigger positions

## XE RANGE | environmental sensing

The Nexmosphere XE range offers sensors that analyze and communicate environmental conditions. By detecting the surrounding circumstances, we enable the possibility to log and communicate these values, as well as actively respond to certain critical threshold levels such as high temperature.

### AMBIENT LIGHT SENSOR



The XE- Ambient light sensor detects the amount of light in its surroundings and communicates the amount of lux back to the Xperience controller, facilitating adjustment of lighting levels based on environmental light conditions.

#### Ambient light sensor (lux)

**XE-A20** | 1 - 120.000 lux

### TEMPERATURE SENSOR



The XE-Temperature sensor detects temperature and humidity levels and can be adhered to heat sensitive objects. Triggers can be used to build a log file for warranty evaluation and to send messages to centralized systems to help protect installations. This simplifies compliance to a growing body of regulations within the digital signage industry.

#### Temperature detection Humidity detection

**XE-T50** | -25°C | +75°C temp  
1 - 99% Humidity

## XS RANGE | wired pick-up sensors

The Nexmosphere X-Snapper range offers magnetic pick-up sensors that can also be used as active security devices. Merchandize is mounted onto the sensor and when lifted or placed back, the X-Snapper sends a trigger to the connected Xperience controller, facilitating content triggering and measurement of pick-up durations. The security function sends triggers whenever merchandize is removed, the wire is cut or pulled out. This sensor is specially designed to attach to handheld devices of different sizes and shapes.

### XS SERIES



The XS-Snapper detects either release from, or connection with, its passive counter block and sends triggers to the connected Xperience controller accordingly, both registering pick-ups and place downs. Use the XS-Snapper for presenting smaller, handheld devices such as shavers, toothbrushes or phones.

#### Wired pick-up sensor (HALL) Active security

*white housing:*

<b>XSW-X16</b>	pick-up only
<b>XSW-X26</b>	security only
<b>XSW-X36</b>	pick-up and security
<b>XSW-N0S</b>	counter block

*black housing:*

<b>XSB-X16</b>	pick-up only
<b>XSB-X26</b>	security only
<b>XSB-X36</b>	pick-up and security
<b>XSB-N0S</b>	counter block

all | coiled cable

### XL SERIES



The XL-Snapper detects either release from, or connection with, its passive counter block and sends triggers to the connected Xperience controller accordingly, both registering pick-ups and place downs. Use the flat XL-Snapper for presenting larger devices such as tablets and the curved model for hair stylers.

#### Wired pick-up sensor (HALL) Active security

*white housing, flat cover*

<b>XLFW-X16</b>	pick-up only
<b>XLFW-X26</b>	security only
<b>XLFW-X36</b>	pick-up and security
<b>XLFW-N0S</b>	counter block

*black housing, flat cover*

<b>XLFB-X16</b>	pick-up only
<b>XLFB-X26</b>	security only
<b>XLFB-X36</b>	pick-up and security
<b>XLFB-N0S</b>	counter block

*all options also available with curved cover. E.g.:*

<b>XLCW-X36</b>	pick-up and security
<b>XLCB-X36</b>	pick-up and security

## XS ACCESSORIES | pedestals, holders & spares

The Nexmosphere X-snapper range is complemented by accessories and spare parts specifically designed for instore use. This makes completion and installation of POS designs fast and easy while providing a professional finish.

### X-SNAPPER DOUBLE



The X-Snapper double consists of two magnetic X-snapper blocks attached to a single continuous spiral cable. This double snapper is not attached to an Xperience controller and does not send triggers. It can be used to securely display products and make sure they are not misplaced after use.

#### Passive merchandize security

<b>XSW-X1S</b>	100mm cable
<b>XSW-X2S</b>	200mm cable
<b>XSW-X3S</b>	300mm cable

<b>XLFW-X1S</b>	100mm cable, XL
<b>XLFW-X2S</b>	200mm cable, XL

*XL versions also available with curved cover*

### X-SNAPPER STAND



The X-Snapper stand is a pedestal designed for use with the X-Snappers. The stand is bolt fixed in the POS furniture and the X-Snappers are installed on top of its surface. It allows placement of the merchandize at an angle facing the shopper, giving a 'floating' appearance while the stand itself remains visually hidden behind the merchandize.

#### Merchandize placement

<b>XAT-HL2</b>	25°, low height
<b>XAT-HL4</b>	45°, low height
<b>XAT-HM2</b>	25°, medium height
<b>XAT-HM4</b>	45°, medium height
<b>XAT-HH2</b>	25°, high height
<b>XAT-HH4</b>	45°, high height

all | transparent

### X-SNAPPER SPARE TAPE



The X-Snapper spare tapes can be used when merchandize is replaced on the POS because of maintenance reasons or the renewal of merchandize during seasonal rotation.

#### Double-sided tape

<b>XAS-TS1</b>	10-pack
<b>XAS-TS5</b>	50-pack
<b>XAS-TS9</b>	1365 roll

all | double-sided  
industrial standard

### PRICE TAG HOLDER



The price tag holder is designed for use with the X-Snapper stand. It can be positioned in place using the bolt fixation of the X-snapper stand. This leaves dedicated space to the side of the X-snapper stand where you can place price and product information.

#### Double-sided tape

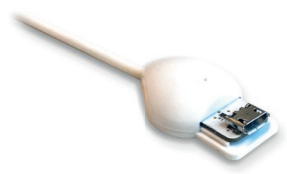
<b>XAT-PLS</b>	low, short length
<b>XAT-PLL</b>	low, long length
<b>XAT-PLL</b>	high, short length
<b>XAT-PHL</b>	high, long length

all | 20° viewing angle  
transparent

## XD RANGE | easy interfacing

The Nexmosphere X-Dot range offers a variety of functions divided into two subdivisions: easy interfacing and wired pick-up sensors. They share their ultra-small form factor and the cable design that offers the flexibility of both bottom and side feed installation. Giving the option to use the Elements directly on a surface or to hide the cable from sight. They're easy to install, use and maintain due to the non-marking double-sided installation tape and high-quality finishing.

### X-DOT SERIAL INTERFACE



The X-Dot Serial interface connects a USB or serial port from a 3rd party device -such as a screen-, to any Nexmosphere controller. This enables bi-directional communication between the connected 3rd party device and the Nexmosphere Controller.

#### Serial interfacing

<b>XDW-S30</b>	serial over USB
<b>XDW-S40</b>	RS-232 serial
<b>XDW-S50</b>	TTL serial

### X-DOT I/O INTERFACE



The X-Dot I/O interfaces generic I/O devices such as pushbuttons, pressure mats, switches, keylocks, and relays. Additionally, the onboard LED controller offers full control over LED behavior for pushbuttons equipped with an LED ring.

#### I/O interfacing

<b>XDW-I36</b>	3.3V I/O
<b>XDW-I56</b>	5.0V I/O

### X-DOT ANALOG INTERFACE



The X-Dot Analog is a versatile interface that connects 5V analog output devices, such as ultrasonic sensors, rotary knobs, sliders, and PIR motion sensors, to interactive installations.

#### Analog sensor interfacing

<b>XDW-A50</b>	5V in / output
----------------	----------------

### X-DOT BUZZER INTERFACE



The X-Dot Buzzer is a dual interface for 5V buzzer/ tweeter devices that can be implemented whenever triggering confirmation sounds is required in an installation. I.e. alarm functionality, beep confirmation of an executed action, or attention requested.

#### Buzzer interfacing

<b>XDW-B06</b>	interface only
<b>XDW-B46</b>	interface incl. beeper

## XD RANGE | wired pick-up sensors

The Nexmosphere X-Dot range offers a variety of functions divided into two subdivisions: easy interfacing and wired pick-up sensors. They share their ultra-small form factor and the cable design that offers the flexibility of both bottom and side feed installation. Giving the option to use the Elements directly on a surface or to hide the cable from sight. They're easy to install, use and maintain due to the non-marking double-sided installation tape and high-quality finishing.

### X-DOT X



The X-Dot X is a wired pick-up sensor that can also be used as an active security device. The sensor is mounted onto the merchandize using double-sided tape. When a product is lifted or placed back, the X-Dot sends a trigger to the connected Xperience controller. The security function sends triggers whenever merchandize is removed, the wire is cut or pulled out.

#### Wired pick-up sensor (accelerom.) Active security

*white housing:*

<b>XDW-X16</b>	pick-up only
<b>XDW-X26</b>	security only
<b>XDW-X36</b>	pick-up and security

<b>XDW-X36C</b>	pick-up and security coiled cable
-----------------	--------------------------------------

*black housing:*

<b>XDB-X16</b>	pick-up only
<b>XDB-X26</b>	security only
<b>XDB-X36</b>	pick-up and security

<b>XDB-X36C</b>	pick-up & security coiled cable
-----------------	------------------------------------

### X-DOT X SPARE TAPES



The X-Dot spare tapes can be used when merchandize is replaced on the POS because of maintenance reasons or the renewal of merchandize during seasonal rotation.

#### Double-sided tape

<b>XAS-TX1</b>	10-pack
<b>XAS-TX5</b>	50-pack
<b>XAS-TX9</b>	2750 roll

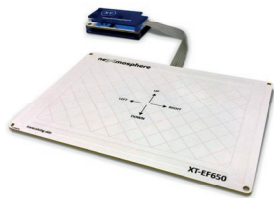
<b>all</b>	double sided industrial standard
------------	-------------------------------------



## XT RANGE | airbuttons, capacitive touch & mechanical buttons

The Nexmosphere X-Touch range can be applied when looking to integrate buttons. The implementation of buttons allows conversion from static digital signage, into interactive and responding presentations by having the shopper give input choices and selection options. AirGesture and AirButton sensors process in-the-air swiping, circling and button presses and provide a solid non-touch solution.

### XT-EF AIRGESTURE AND AIRBUTTONS (NON-TOUCH INPUT)



The XT-EF series sensors can detect AirButtons, AirGestures and AirWheels. AirButton detects whenever a person's hand enters and leaves the sensor's detection field and can also register and respond to physical Touch input. AirGesture registers left, right, up, and -down swipes within the detection field. AirWheel detection processes circle tracing by the user's fingers above the sensor.

#### E-Field Gesture tracking Non-touch input

XT-EF680	180x140mm
XT-EF650	140x90mm
XT-EF630	90x70mm AirButton, AirGesture, AirWheel
XT-EF30	90x70mm AirButton only

### TOUCH BUTTONS



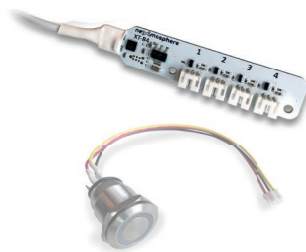
The X-Touch capacitive buttons detect a person's touch on the button or an overlying material. The technology works with multiple non-metal overlay materials, such as acrylic, glass, cardboard, and wood. They can be integrated into furniture without visually drawing away from the design.

#### Capactive touch LED control

XT-4FW6	4 small butons, linear
XT-4GW6	4 small butons, rect.
XT-1EW6	1small button
XT-1GW6	1 large button

all | fitted with button LEDs

### PUSH-BUTTON INTERFACE



The X-Touch button interface is a 4-channel push-button interface with LED control and can be used in combination with industry-standard push buttons. It allows the connection of up to four buttons onto a single interface. This results in the connection possibility of up to 9 push buttons even on the smallest Xperience controller. Programmable LED output options are on, off, slow and fast blink.

#### Push-button interface LED control

XT-B4N6	4 interfaces 3.3V LED contr. easy click-in
---------	--

#### Push buttons (accessory item)

S-B90xxx	19mm standard
S-B95xxx	19mm value line

# CONTROLLERS

## connecting Elements



## CONTROLLERS

Xperience controllers are used to combine Elements onto and connect them to any Digital Signage player or PC. The controller is the part of the system that translates the communication coming from the Elements to the connected device and vice versa. Some of the controllers have additional functionalities embedded into them such as LED control or audio switching.

## API

Each controller runs Nexmosphere's API. This API provides full control over all connected Elements to the Digital Signage player to which the controller is connected.

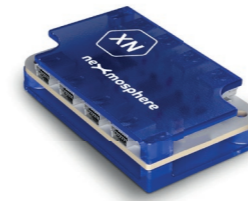
Each time a sensor is triggered, an API command is automatically sent from the Xperience controller to the Digital Signage player. Vice versa, actuators such as LED and audio switches can be easily controlled by sending API commands from the Digital Signage player to the Xperience controller.

All API commands are sent via serial communication. Both controllers with RS-232 serial interfacing as well as Serial-over-USB are available.

## XN-RANGE | nano Xperience controllers

The Nexmosphere XN range offers Xperience controllers in a small form factor making it ideal to use when space is limited and integration with other systems is required. Connect your Elements of choice and build a unique shopper journey; LED lighting that starts glowing when a shopper approaches or product info showed when a product is placed on an "info platform". Whichever interactivity suits your brand's story, create a lasting impression using the XN Xperience controller.

### XN-100 SERIES



The connection method to Nexmosphere's Elements is called X-talk. Calculate the number of X-talk channels needed by adding up the number of Elements used and pick the right model for the job. Nano controller models that are fitted with a MicroBay or onboard interface, offer an additional connection possibility for specific Elements. The Controllers are equipped with a USB or RS232 interface to integrate the sensor Elements with your connected device.

#### RS-232 interface X-talk only

**XN-180** | 8x X-talk

#### USB interface X-talk only

**XN-135** | 2x X-talk  
**XN-185** | 8x X-talk

#### USB interface X-talk & onboard interfacing

**XN-135M3** | 2x X-talk, 1x Presence interf.  
**XN-135M8** | 2x X-talk, 1x X-Wave interf.  
**XN-165** | 2x X-talk, 1x 4 button interf.

### XN-RANGE ACCESSORIES



The Nexmosphere Nano range is complemented with the cables needed for communication and power supply. When using XN models with a USB interface, the USB port of the connected device also provides power to the Nexmosphere controller. Most USB ports supply enough power to the Elements without the need for additional power, except when connecting LEDs. When using LEDs consider the use of a USB split cable together with a power supply to provide enough power or consult us for advice. When using the XN models with a serial connection, the use of a power supply is always required.

#### USB cables

**CA-UM4B** | Micro-USB cable, 60cm  
**CA-UM6B** | Micro-USB cable, 180cm

#### USB split cables (power/data)

**CA-US5B** | Micro-USB split cable  
USB-A / USB-A  
**CA-UD5B** | Micro-USB split cable  
2.5mm DC / USB-A

#### Serial cables

**CA-JJ9B** | Jack 3.5 to Jack 3.5  
**CA-JD9B** | Jack 3.5 to D-sub 9

#### Power supplies (USB)

**PU-0520EU** | EU, 5VDC/2A, USB  
**PU-0520US** | US, 5VDC/2A, USB

#### Power supplies (DC, grounded)

**PU-0530EU** | EU, 5VDC/3A, 2.5mm  
**PU-0530US** | US, 5VDC/3A, 2.5mm

## XC-RANGE | compact Xperience controllers

The Nexmosphere XC range offers Xperience controllers in a compact form factor while offering various onboard functionalities. Choose the right controller series based on the functionality needed, whether this is controlling multiple RGBW LED strips, pixel LED strips or (optical) audio switching. Combine this with Elements connected onto the X-talk channels to build your own unique experience.

### XC-700 SERIES



The 700 series is equipped with LightMark interfaces which allow connecting flexible pixel LED strips. LightMark LED technology allows the user to select one of the numerous pre-programmed animation patterns and modify its parameters to fit the exact application, whether it's a gentle soft glow or a complex running light.

[LightMark pixel LED control](#) | [X-Talk interface](#) | [USB API interface](#)

<b>XC-720</b>	2x LightMark interface, 4x X-talk
<b>XC-741</b>	4x LightMark interface, 8x X-talk
<b>XC-748</b>	4x LightMark interface, 4x X-talk, 2x RGBW LED output
<b>XC-760</b>	6x LightMark interface, 4x X-talk

### XC-800 SERIES

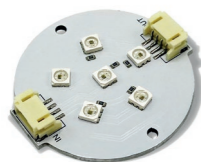


The 800 series is equipped with full dimmable RGBW LED outputs which allow connecting 12/24V LED strips. Transition smoothly between different colors and create just the right atmosphere with subtle lighting and tailored RGBW LED colors.

[RGBW LED output](#) | [X-Talk interface](#) | [USB API interface](#)

<b>XC-820</b>	2x RGBW LED output, 4x X-talk
<b>XC-841</b>	4x RGBW LED output, 8x X-talk
<b>XC-847</b>	4x RGBW LED output, 4x X-talk, 2x LightMark interface
<b>XC-860</b>	6x RGBW LED output, 4x X-talk

### LED BOARDS



The LED boards come in various shapes and are fitted with either Pixel or RGBW LEDs. They connect directly to the XC controllers and can be daisy-chained, making them easy, and flexible to install. They're especially suitable for highlighting sections on a translucent panel.

#### Pixel LED boards for XC-700 series

<b>LB-P206C</b>	6 LEDs, circular 50mm
<b>LB-P212R</b>	12 LEDs, 90x100mm
<b>LB-P219C</b>	19 LEDs, circular 100mm

**CAW-NxW** | connection cable  
Pixel LED boards

#### RGBW LED boards for XC-800 series

<b>LB-X506C</b>	6 LEDs, circular 50mm
<b>LB-X512R</b>	12 LEDs, 90x100mm
<b>LB-X518C</b>	18 LEDs, circular 100mm

**CA5-NxW** | connection cable  
RGBW LED boards

## XC-RANGE | compact Xperience controllers

### XC-900 SERIES



The 900 series is equipped with audio switches to facilitate easy and seamless switching of an incoming audio stream from one speaker, soundbar or headphone to another. Both analog switches (3.5mm jack plug) and optical switches (Mini-Toslink) are available.

[Audio switching](#) | [X-Talk interface](#) | [USB API interface](#)

<b>XC-931</b>	4x optical switch, 8x X-talk
<b>XC-937</b>	4x optical switch, 4x X-talk, 2x X-Wave interface
<b>XC-938</b>	4x optical switch, 4x X-talk, 2x RGBW LED output

<b>XC-941</b>	4x analog switch, 8x X-talk
<b>XC-947</b>	4x optical switch, 4x X-talk, 2x X-Wave interface
<b>XC-948</b>	4x analog switch, 4x X-talk, 2x RGBW LED output

### XC-RANGE ACCESSORIES



The Nexmosphere XC range is complemented with the cables needed for communication and power supply. The Compact range controllers require a USB cable for communication and a power supply. Calculate the power consumption of the complete system or consult us for advice to pick the right power supply for your project.

#### Power supplies 24V

<b>PS-2416EU</b>	EU, 24VDC/1.67A, 2.1mm
<b>PS-2416US</b>	US, 24VDC/1.67A, 2.1mm

<b>PS-2425EU</b>	EU, 24VDC/2.5A, 2.1mm
<b>PS-2425US</b>	US, 24VDC/2.5A, 2.1mm

<b>PS-2438EU</b>	EU, 24VDC/3.75A, 2.1mm
<b>PS-2438US</b>	US, 24VDC/3.75A, 2.1mm

#### Power supplies 12V

<b>PS-1220EU</b>	EU, 12VDC/2A, 2.1mm
<b>PS-1220US</b>	US, 12VDC/2A, 2.1mm

<b>PS-1250EU</b>	EU, 12VDC/5A, 2.1mm
<b>PS-1250US</b>	US, 12VDC/5A, 2.1mm

#### USB cables

<b>CA-UM4B</b>	Micro-USB cable, 60cm
<b>CA-UM6B</b>	Micro-USB cable, 180cm

#### Pixel LED strips for XC-700 series

<b>L-P1xxxxxW</b>	Pixel LED strip 30 LEDs/m
<b>L-P2xxxxxW</b>	Pixel LED strip 60 LEDs/m
<b>L-P3xxxxxW</b>	Pixel LED strip 144 LEDs/m



#### RGBW LED strips for XC-800 series

<b>L-X5xxxxxL</b>	RGBW LED strip 24V 60 LEDs/m
-------------------	---------------------------------

## XM-RANGE | modular Xperience controllers

The Nexmosphere XM range offers Xperience controllers in an configurable and extendable form factor making it ideal to use when functionality combinations which aren't available in the smaller ranges are required. This series consists of XM controllers and EM extension units, which are mounted together at our production facilities in order to offer you just the right set of functionalities for your project.

### XM CONTROLLERS



The Modular controllers are fitted with 1 X-talk channel on the unit itself and can support up to 5 Extension Modules and 8 Shop Modules. The Controllers are equipped with a USB or RS232 interface to integrate the sensor Elements with your connected device via our API.

#### Modular architecture API interfacing

XM-350 | RS-232 API interfacing

### EXTENSION MODULES



The EM modules define the exact specification of the complete XM Xperience controller. Combine any of the modules into one system to make it fit the application requirements. Different functionalities such as LED control, audio switching or large numbers of Element connections through X-talk channels can all be combined on a single XM controller. The EM modules are pre-assembled onto the XM controllers at our production facilities.

#### Modular architecture Audio switching

EM-1	1x audio input
EM-4	4x audio switching
EM-30	1x optical input
EM-34	4x optical switching

#### Modular architecture Wireless X-talk

EM-F1	1x wireless X-talk
EM-F4	4x wireless X-talk
EM-F8	8x wireless X-talk

#### Modular architecture LED control

EM-2	1x RGB LED output
EM-5	5x mono LED output
EM-6	5x RGB LED output

#### Modular architecture X-talk

EM-7	4x X-talk
EM-8	8x X-talk

## XM-RANGE | modular Xperience controllers

### SHOP MODULES



Shopbus Modules are specifically designed for two reasons; firstly, creating large systems where more interfaces are needed than one XM controller with connected EM modules can provide. And secondly; allowing large interspacing between several control units, when Elements are needed far apart from each other. The Shopbus architecture enables connecting multiple XM-like controller units together, with the possibility of using long cable lengths between the units. All the while, the interfacing towards the connected device can still take place through one serial communication connection.

#### X-talk

SM-100	8x X-talk
SM-200	16x X-talk
SM-300	24x X-talk
SM-400	32x X-talk

#### X-talk LED control

SM-110	8x X-talk, 5x mono LED output
SM-115	8x X-talk, 5x RGB LED
SM-120	8x X-talk, 10x mono LED output
SM-125	8x X-talk, 10x RGB LED

### XM-RANGE ACCESSORIES



The Nexmosphere Modular range is complemented with the cables needed for communication and power supply. The XM controllers require a serial connection cable and a power supply. Depending on the Elements connected to the EM modules, additional power supplies might be required on individual EM modules. When using Shopbus modules, Shopbus cables are required between the units. Calculate the power consumption of the complete system or consult us for advice to pick the right power supply for your project.

#### Serial cables

CA-9J9B	RJ-9 to Jack 3.5mm
CA-9D9B	RJ-9 to Sub-D9
CA-9U9B	RJ-9 to USB

#### ShopBus cables

CAS-N9R	200cm, red (power)
CAS-N8B	100cm, black
CAS-N9B	200cm, black
CAS-NDB	10m, black
CAS-NHB	25m, black

#### Power supplies (5V, XM controller)

PS-0520EU	EU, 5VDC/2A, 2.5mm
PS-0520US	US, 5VDC/2A, 2.5mm
PS-0530EU	EU, 5VDC/3A, 2.5mm
PS-0530US	US, 5VDC/3A, 2.5mm

#### Power supplies (12V, LED modules)

PS-1220EU	EU, 12VDC/2A, 2.1mm
PS-1220US	US, 12VDC/2A, 2.1mm
PS-1250EU	EU, 12VDC/5A, 2.1mm
PS-1250US	US, 12VDC/5A, 2.1mm

#### Power supplies (24V, LED modules)

PS-2416EU	EU, 24VDC/1.67A, 2.1mm
PS-2416US	US, 24VDC/1.67A, 2.1mm
PS-2425EU	EU, 24VDC/2.5A, 2.1mm
PS-2425US	US, 24VDC/2.5A, 2.1mm

PS-2438EU	EU, 24VDC/3.75A, 2.1mm
PS-2438US	US, 24VDC/3.75A, 2.1mm

#### RGB LED strips for EM-6

L-X5xxxxxS	RGBW LED strip 24V 60 LEDs/m
------------	---------------------------------